



ZH50 导热硅胶 ZH50 Thermal Silicon Pad

技术数据表 Technical Data Sheet



ZH50 is a ceramic particles filled silicone rubber, which is good balance for thermal performance with competitive price and providing 5.0W thermal conductivity. It is used between heat sink and heat generating components. Its ultra soft proper enable filling air voids and rugged surface, and wetting out matting surfaces in order to efficiently transfer heat from components to heat sink.

Typical Applications:

- .- communication
- .- mobile
- .- Power module
- .- LED
- .- Car electronic
- .- other high thermal

物理參數	
顏色	浅灰
厚度(mm)	0.5-10
密度(g/cm ³)	3.22
硬度(Shore C)	25-45
有效工作溫度 (°C)	-40-180
延伸率 (%)	35
抗撕裂強度(KN/M)	≥0.2
重量損失(%)	<0.1
電氣性能	
抗擊穿電壓(Kv/mm)	≥5
體積電阻(Ω. Cm)	6X10 ¹²
防火等級(UL-94)	V-0

(continued on next page)



導熱性能

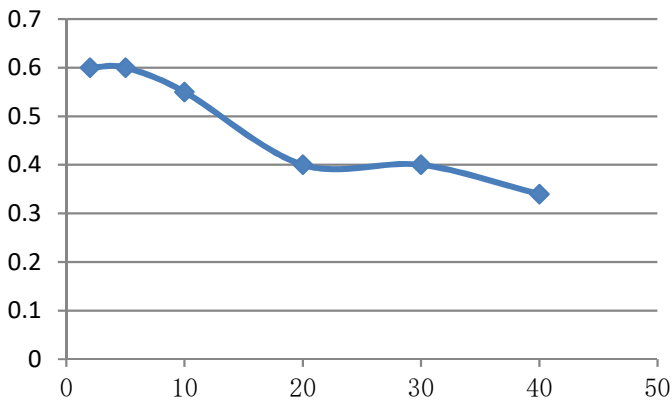
導熱係數W/m.k

5.0

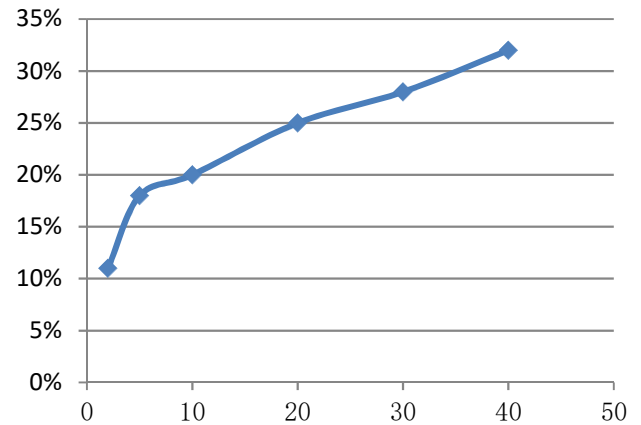
熱阻特性與壓力關係

壓力 (PSI)		2	5	10	20	30	40
ZH50	熱阻 (°Cin ² /W)	0.6	0.6	0.55	0.4	0.4	0.34
	壓縮比例 (%)	11%	18%	20%	25%	28%	32%

ZH50壓力與熱阻關係圖



ZH50壓力與壓縮比例關係圖



This information and our technical advise – whether verbal, in writing or by way of trials – are given in good faith but without warranty, and this also applies where proprietary rights of third parties are involved. Our advice does not release you from the obligation to check its validity and to test our products as to their suitability for the intended processes and uses. The application, use and processing of our products and the products manufactured by you on the basis of our technical advice are beyond our control and, therefore, entirely your own responsibility. Our products are sold in accordance with our General Conditions of Sale and Delivery.